



RIVERSIDE
COUNTY
TRANSPORTATION
COMMISSION



I-10 HIGHLAND SPRINGS INTERCHANGE IMPROVEMENT PROJECT

Banning City Council

May 25, 2021



David Lewis, RCTC Capital Projects Manager

Background

- September 2019 – RCTC, City of Beaumont, and City of Banning entered into Cooperative Agreement to prepare Highland Springs Interchange PSR
- Western Riverside Council of Governments provided \$2 million in TUMF Zone funding
- March 2020 – PSR-PDS started



Anticipated Schedule

PSR

- March 2020 – August 2021

PA/ED

- 2 years

PS&E and ROW

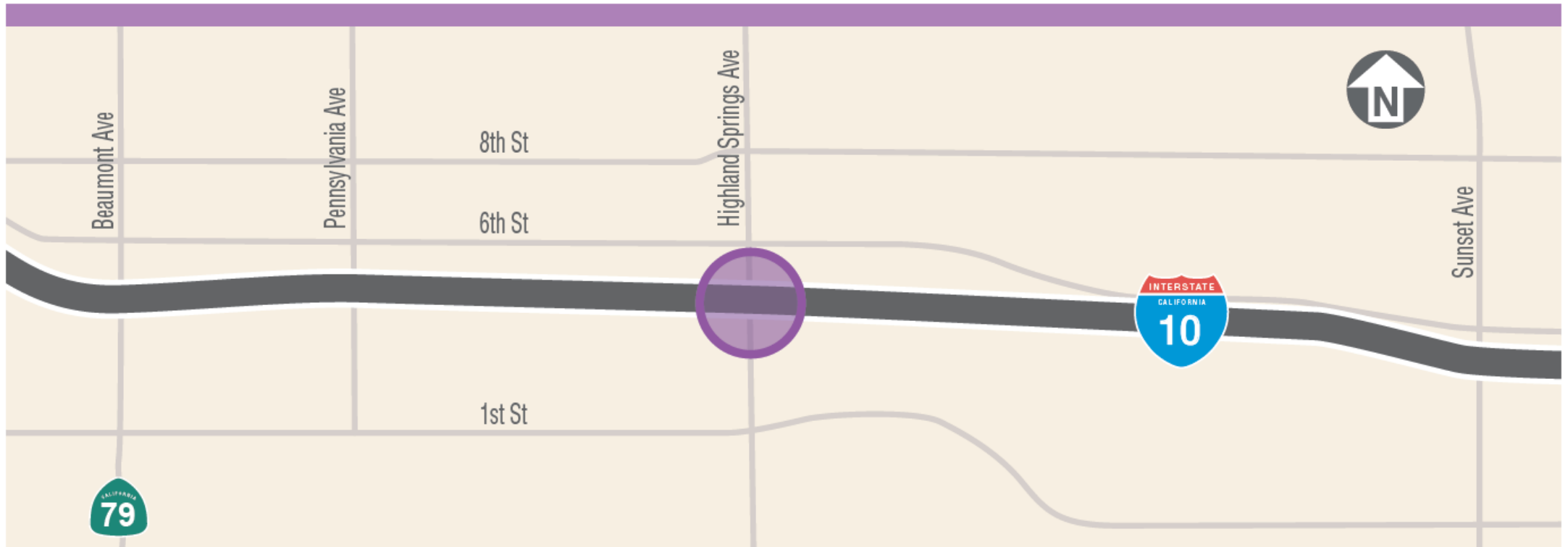
- 2 years

Construction

- 2 years



Project Location



PSR-PDS Highlights

- First draft submitted to Caltrans for review and comment, April 6, 2021
- Alternatives 3 and 4 provide higher traffic Level of Service than other alternatives
- Anticipated Environmental Document
 - CEQA – Initial Study with Proposed Mitigated Negative Declaration (IS/MND)
 - NEPA – Environmental Assessment with Finding of No Significant Impact (EA/FONSI)

PSR-PDS Alternatives Studied

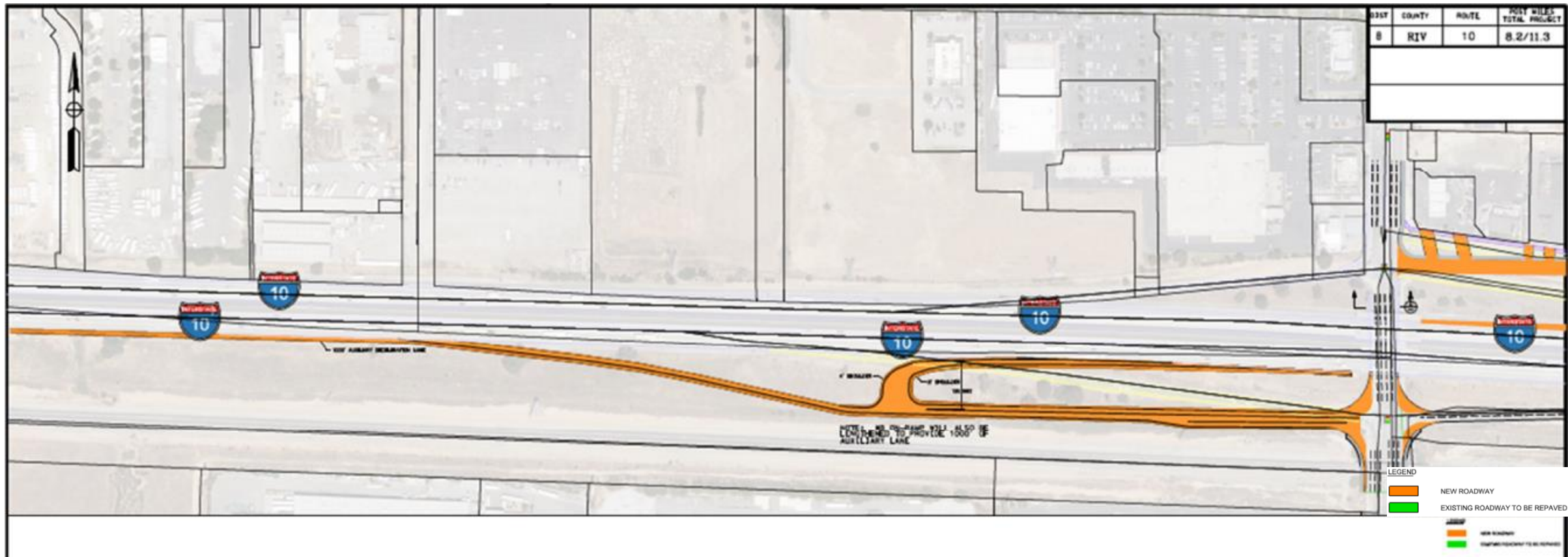
1. No Build
2. Hook Ramps:
 - Option A – New westbound on-ramp from Joshua Palmer Way east of Highland Springs Avenue
 - Option B – New westbound on-ramp from Joshua Palmer Way at intersection with Apex Street
3. Diverging Diamond Interchange with crossover before Union Pacific Railroad Structure
4. Diverging Diamond Interchange with crossover after Union Pacific Railroad Structure

Alts 2, 3, and 4 also include acceleration and deceleration lanes on eastbound and westbound I-10



Alternatives 2A & 2B

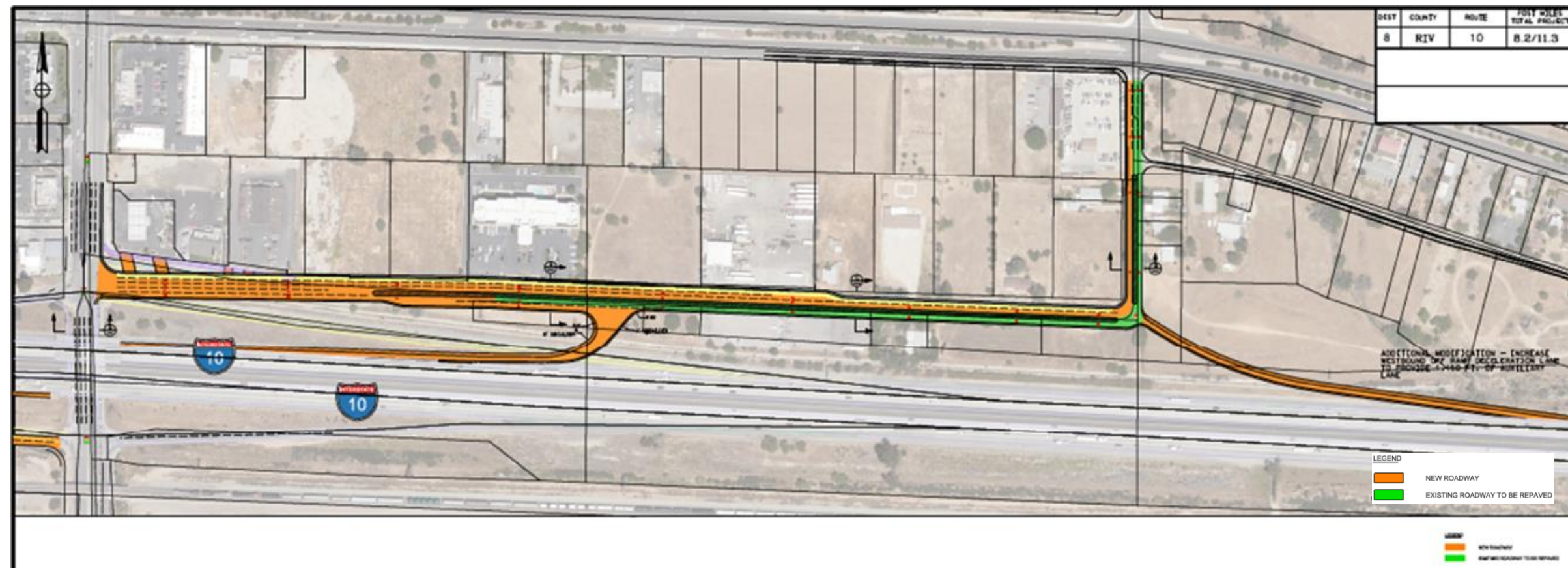
I-10 Eastbound Proposed Improvements





Alternative 2A

I-10 Westbound Proposed Improvements



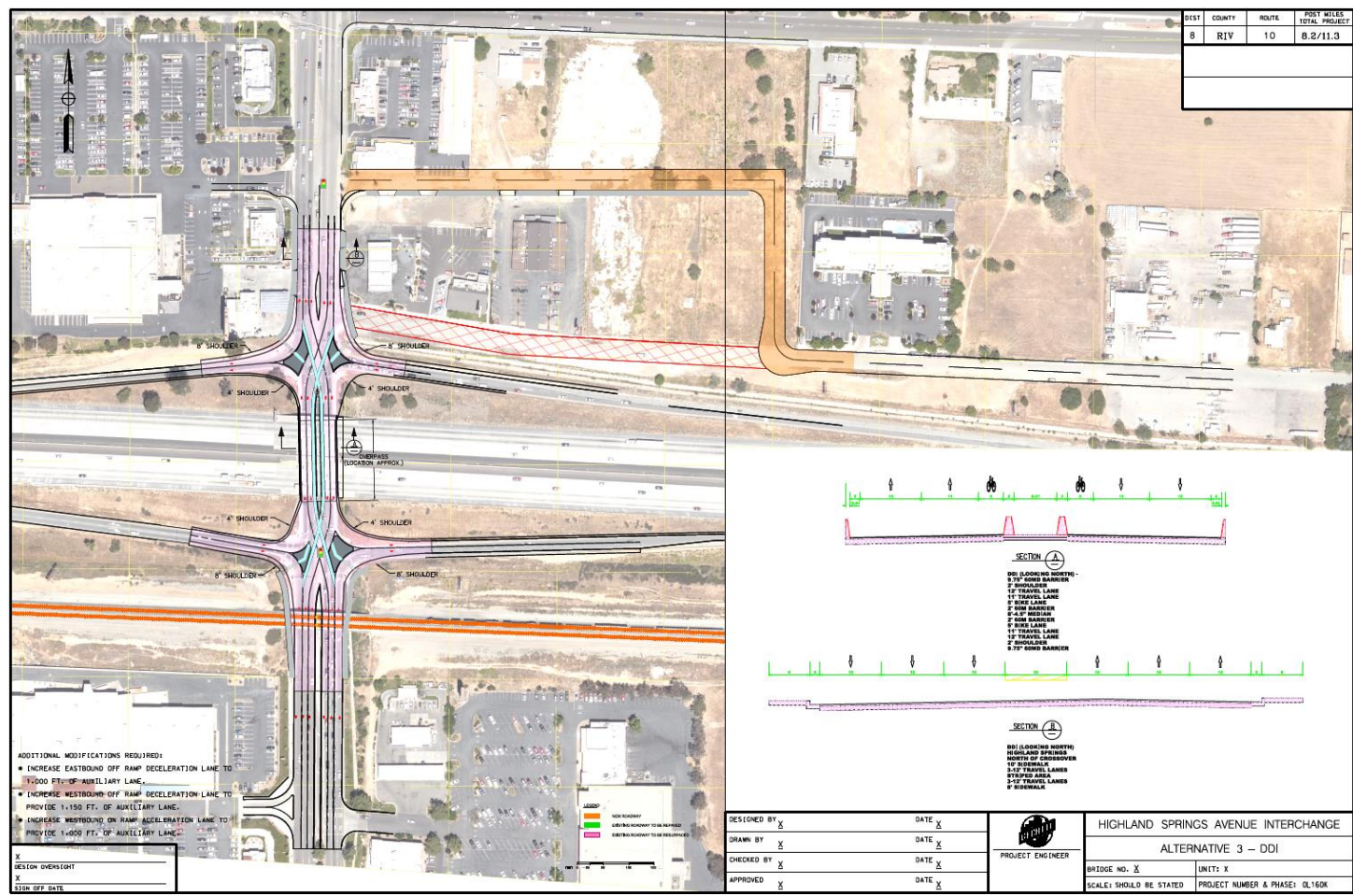
Alternative 2B

I-10 Westbound Proposed Improvements



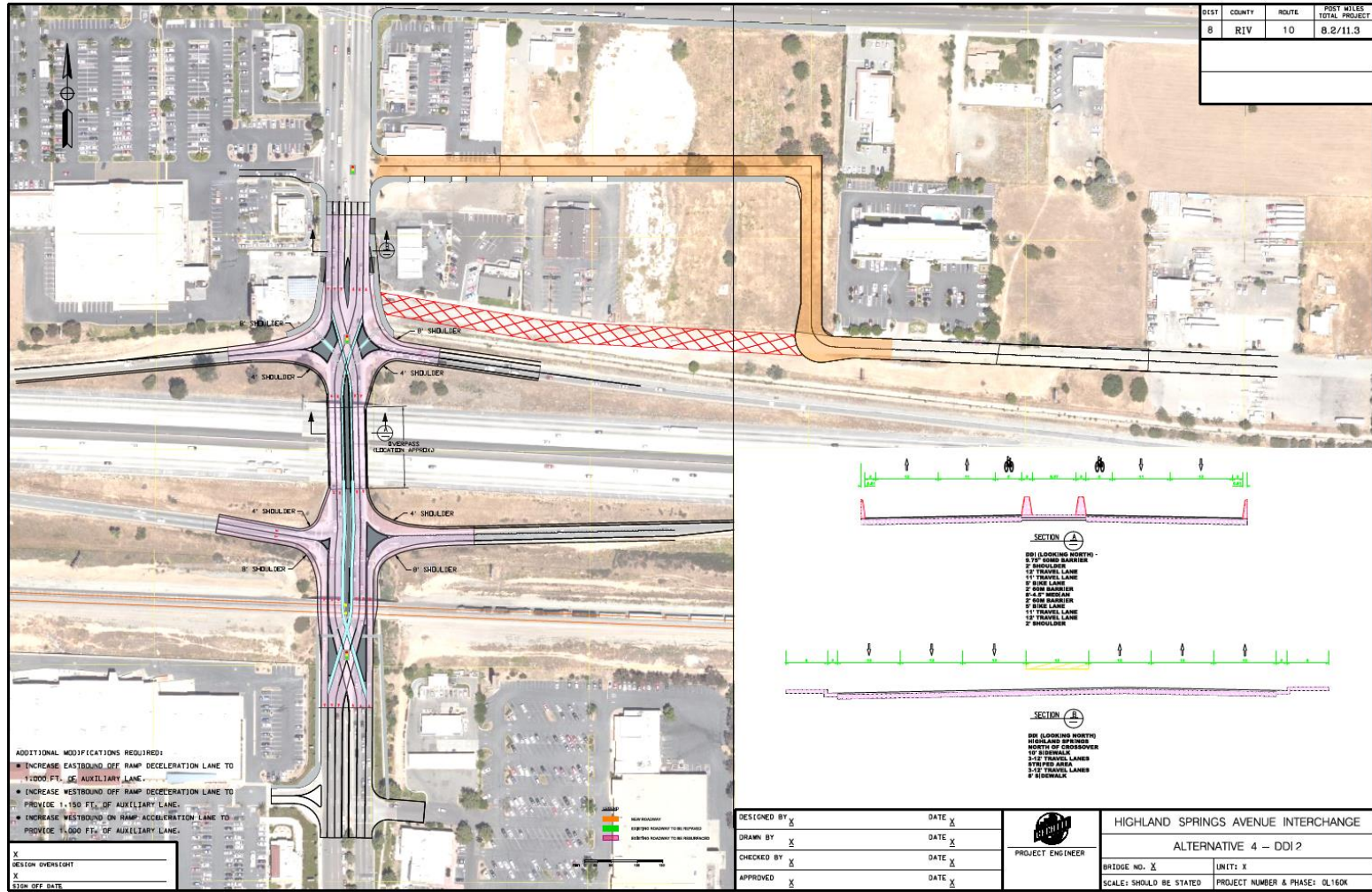


Alternative 3





Alternative 4



Path Forward

- Caltrans approval of PSR-PDS in August 2021
- \$1.5 million remaining balance can be used for PA/ED
- PA/ED Amendment to Cooperative Agreement
- Procure consultant team to perform PA/ED
- Begin PA/ED in December 2021
- Public review and comment of IS/EA occurs in PAED
- Selection of Preferred Alternative occurs in PAED



RIVERSIDE
COUNTY
TRANSPORTATION
COMMISSION



QUESTIONS

